

How to create a communicative activity in Liveworksheets

CEFR level: Any level

Exam task focus: GESE and ISE

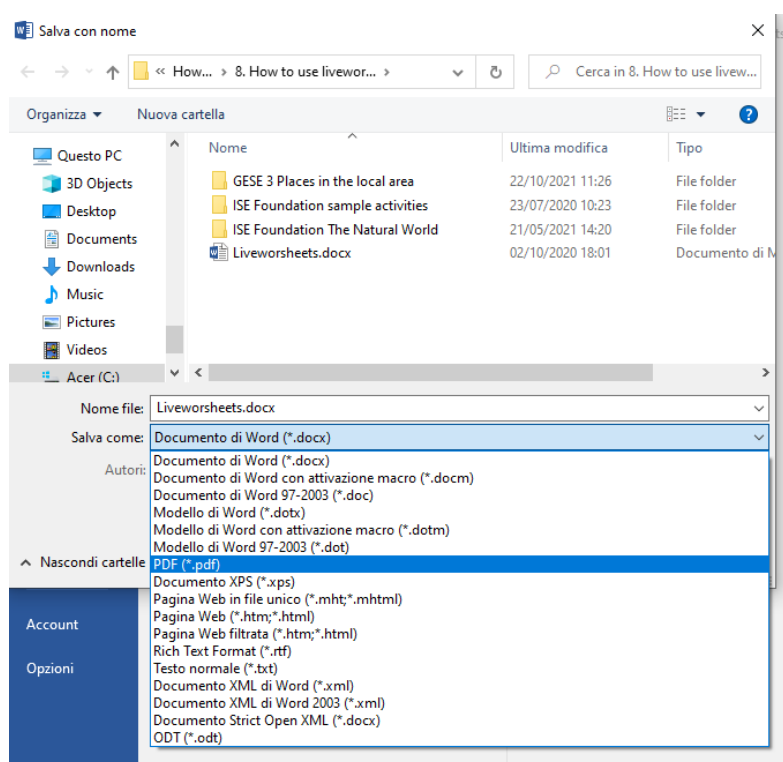
Aims:

- To create an interactive worksheet that can be used to develop speaking, listening, reading & writing skills

Procedure:

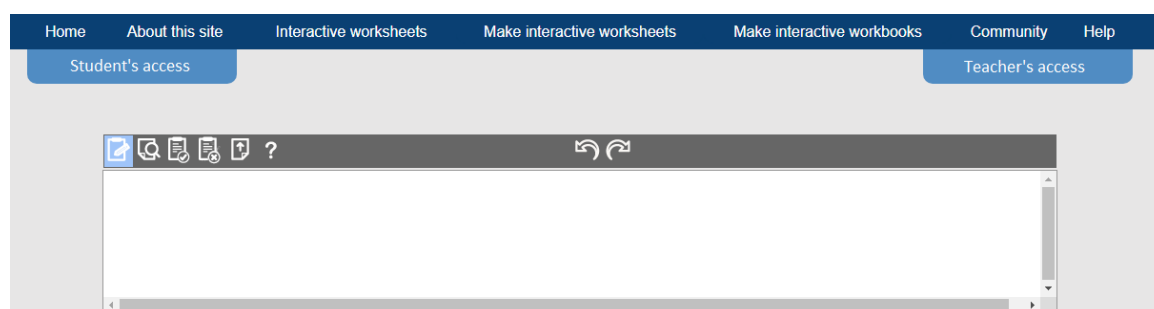
Making an interactive worksheet is easy with their liveworksheets maker.

1. Open the liveworksheet maker
2. Select a file from your computer. The following types of files are accepted: pdf, png or jpeg. To create a pdf from a word file simply click on 'save as' and choose pdf from the dropdown menu.

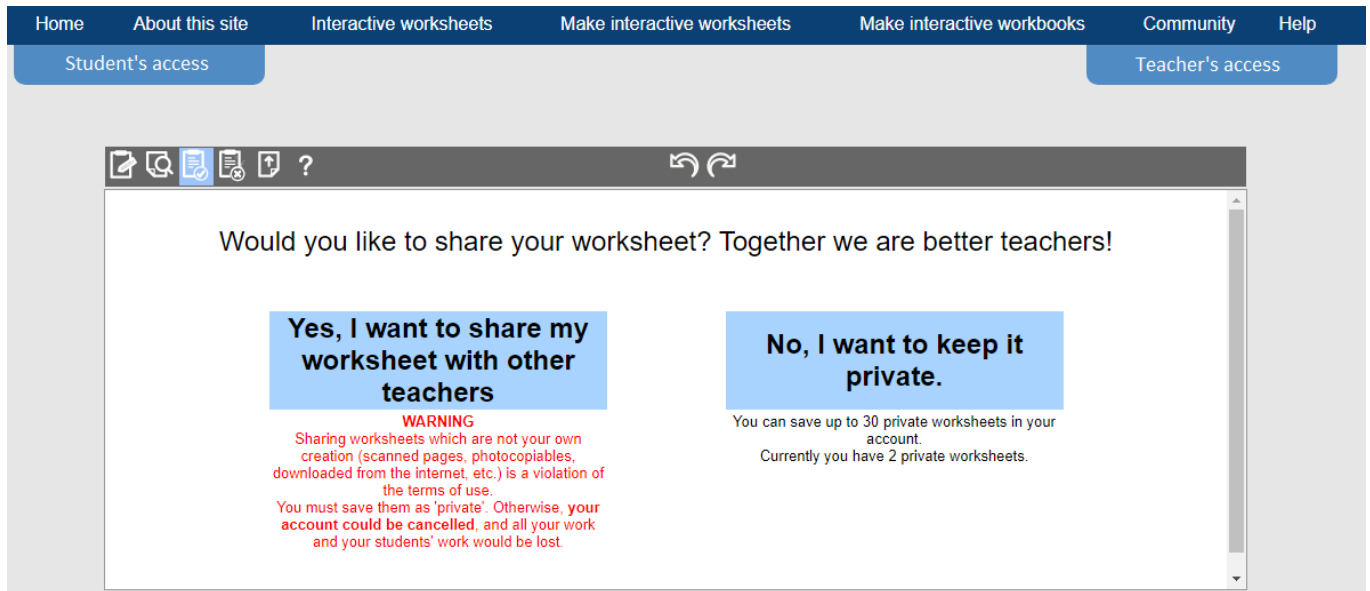


3. Click on upload

4. Your worksheet will open in the editor



5. Click on the rectangle with the pen on it to insert boxes. You will need to draw a box for each answer you want your learners to give on the worksheet.
6. Click on the inside of the text box to insert the correct answer or the command. If more than one answer is possible put them with a slash (/) between each option
6. Once all answers / commands have been inserted, click on the magnifying glass icon to preview your worksheet.
7. Click on the tick to save your interactive worksheet. Choose the option on the left to be able to share your worksheet with our teacher community and the liveworksheet community.



8. When you click on the tick, a window opens and you need to fill out some basic information about the worksheet.

Please enter the following information:

Title:

Language:

School subject:

Grade/level:

Main content:

Other contents:

Age from: to:

Description:

Do you want to share the document as pdf too?
 Yes No

Allow embedding in other websites?
 Yes No

9. Share the link to your liveworksheet on Teacher Chronicles.
[Teacher Chronicles Private Facebook Group](#)